

# Intelitek Licensing Guide



*Part #200082 Revision D*

**intelitek**▶▶<sup>®</sup>

Copyright © 2025 Intelitek Inc.

Tel: (603) 625-8600

Intelitek Licensing Guide

Fax: (603) 437-2137

Part #200082 Revision D

July 2025

website: <http://www.intelitek.com>

email: [info@intelitek.com](mailto:info@intelitek.com)

Intelitek software and documentation are available at <http://intelitekdownloads.com>.

All rights reserved. No part of this publication may be stored in a retrieval system, or reproduced in any way, including but not limited to photocopy, photography, magnetic, or other recording, without the prior agreement and written permission of the publisher. Program listings may be entered, stored, and executed in a computer system, but not reproduced for publication.

Every effort has been made to make this book as complete and accurate as possible. However, no warranty of suitability, purpose, or fitness is made or implied. Intelitek is not liable or responsible to any person or entity for loss or damage in connection with or stemming from the use of the software, hardware and/or the information contained in this publication.

Intelitek bears no responsibility for errors that may appear in this publication and retains the right to make changes to the software, hardware, and manual without prior notice.

## Table of Contents

1.	About Intelitek Software Licensing .....	4
1.1.	License Duration .....	4
1.2.	Licensing Types .....	4
2.	Workstation Licensing.....	5
2.1.	Online Activation .....	5
2.2.	Offline Activation.....	7
2.3.	Online Deactivation .....	9
2.4.	Offline Deactivation.....	10
2.5.	Workstation Licensing FAQs .....	11

# 1. About Intelitek Software Licensing

## 1.1. License Duration

Intelitek software is protected by a licensing agreement.

If the software is installed without a license, you can use the fully operational software for an evaluation period after which the software continues to function in a limited state. To enable full functionality of the software after the evaluation period, it must be unlocked.

Intelitek offers three options for a software license's duration and expiration date:

- **Permanent:** A permanent license has no expiration date.
- **Subscription:** A subscription license is limited to a specific number of days from activation.
- **Expiration Date:** An expiration date license expires at a specific date.

## 1.2. Licensing Types

Intelitek has a single licensing type, known as a **workstation** license. The workstation licensing type provides a license for a single PC. This license can later be transferred to another PC.

The next section provides information on workstation licensing.

Intelitek previously provided what was known as a *network license* but no longer does so.

## 2. Workstation Licensing

The workstation licensing type is used to license Intelitek software to a single computer.

There are two ways to activate an Intelitek Workstation License:

- **Online:** If the PC is connected to the Internet, it can be licensed by entering a Product Key that is verified over the Internet.
- **Offline:** If the PC is not connected to the Internet, it can be licensed by entering a License Activation Code that can be obtained from Intelitek.

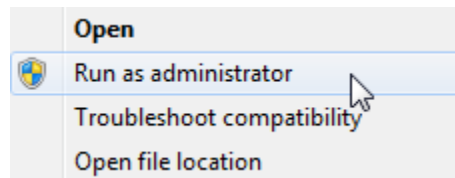
This section describes the process for licensing a workstation online or offline.

### 2.1. Online Activation

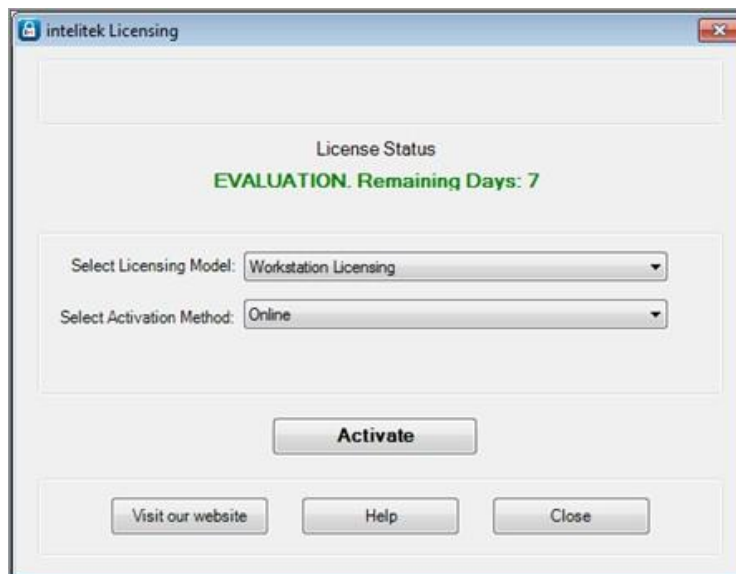
In order to activate Intelitek software on a workstation over the Internet, you need the Product Key that you received when you purchased the software license.

To license the software:

1. Open the software as an administrator by right-clicking its icon in the Windows Start menu and selecting **Run as administrator**.

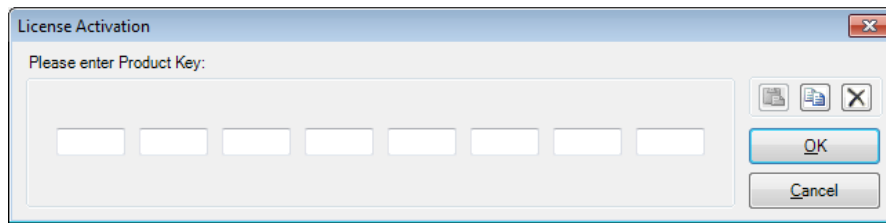



The Intelitek Licensing window is displayed.

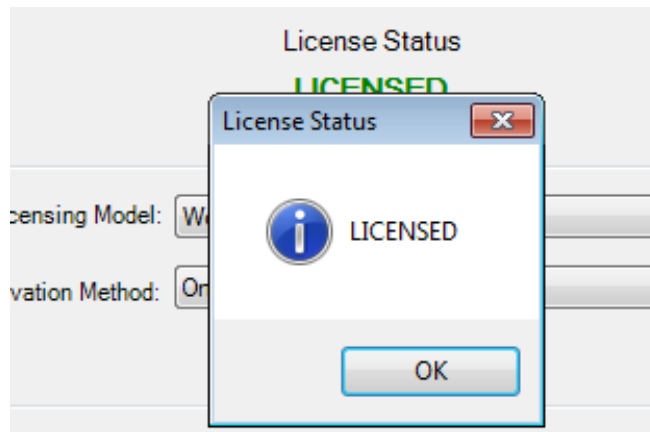


2. Select the **Workstation Licensing** model.
3. Select the **Online activation** method.

4. Click **Activate**. The License Activation window is displayed.



5. Enter your Product Key. You can paste the Product key from the clipboard by clicking the icon. 
6. Click **OK**. The software is licensed, and the License Status dialog box is displayed.



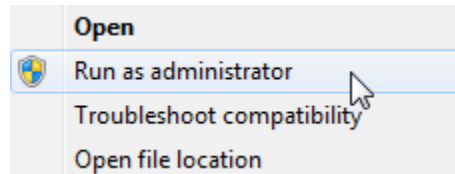
7. Click **OK** to return to the software.

## 2.2. Offline Activation

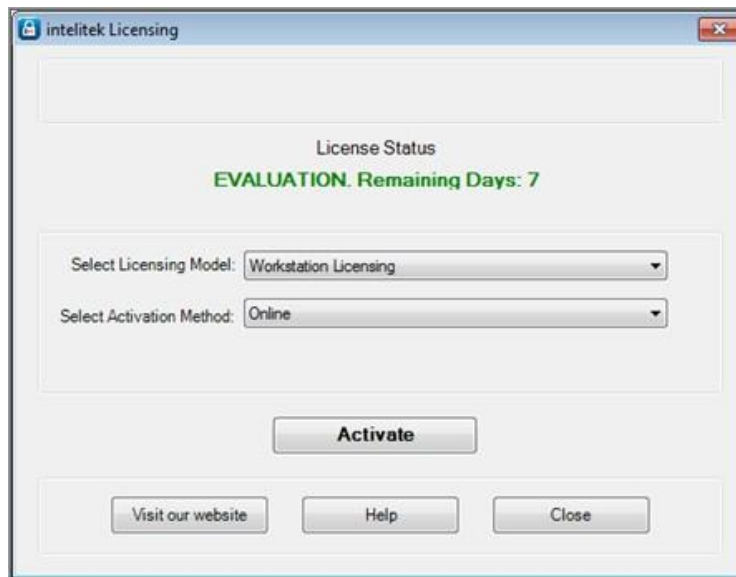
In order to activate the software on a workstation offline, you require a license activation code. This procedure details how to obtain this code and how to license your software offline using the code.

To license Intelitek software offline:

1. Open the software as an administrator by right-clicking its icon in the Windows Start menu and selecting **Run as administrator**.



The Intelitek Licensing window is displayed.

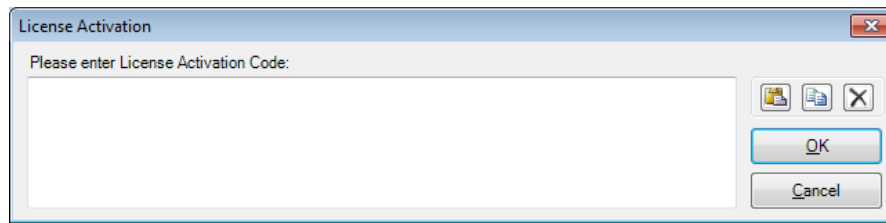



2. Select the **Workstation Licensing** model.
3. Select the **Offline** activation method. A Machine Code is displayed. This code is specific to your PC.

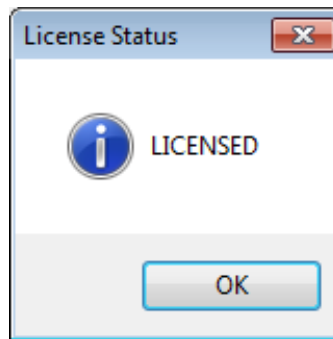


4. Send an E-mail to [support@intelitek.com](mailto:support@intelitek.com) with the Machine Code and the Product Code, requesting a License Activation Code. You will be sent a License Activation Code.

5. In the Intelitek Licensing Window, click **Activate**. The License Activation window is displayed.



6. Enter the License Activation Code you received by email from Intelitek. You can paste the code from the clipboard by clicking the  icon.
7. Click **OK**. The software is licensed, and the License Status dialog box is displayed.



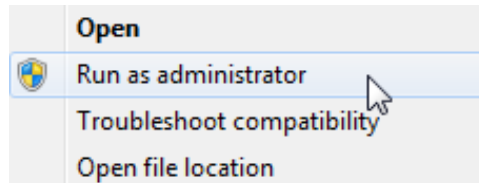
8. Click **OK** to return to the software.

## 2.3. Online Deactivation

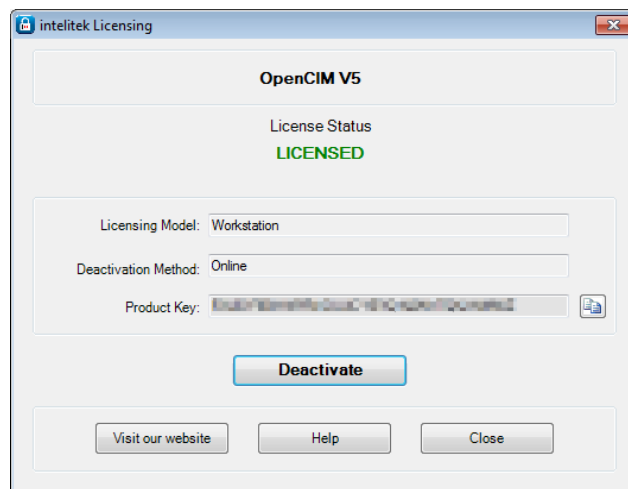
You can deactivate the Intelitek software license on a particular computer online and use the license on a different computer. The license is returned to the Intelitek database.

To deactivate a software license online:

1. Open the software as an administrator by right-clicking its icon in the Windows Start menu and selecting **Run as administrator**.

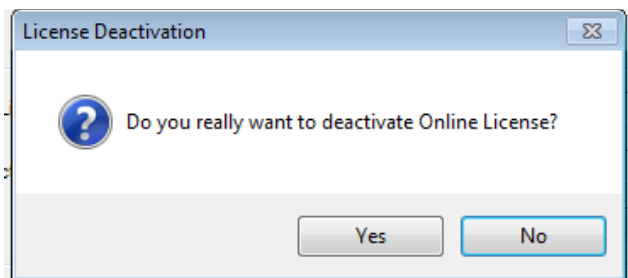


2. In the software's main menu, navigate to **Help | Registration**. The licensing window is displayed.



3. Click **Deactivate**.

The License Deactivation dialog box is displayed.



4. Click **Yes**.
5. Click **OK** to close the dialog box.

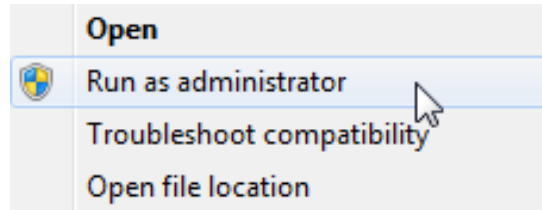
The license is deactivated and can now be used on another computer. The software reverts to limited functionality mode. In this mode, the user can view and save their work but cannot edit. To relicense the software, follow the instructions in Section 2.1 Online Activation on page 5.

## 2.4. Offline Deactivation

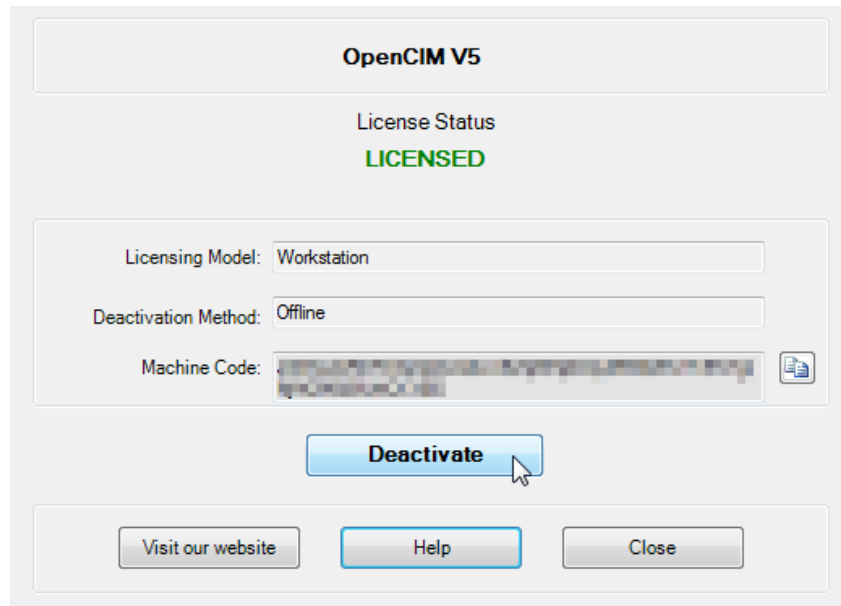
You can deactivate the software license on a particular computer offline. A deactivation code is provided that must be emailed to Intelitek to return the license to the Intelitek database. The license can then be retrieved by contacting Intelitek for use on another computer.

To deactivate a software license offline:

1. Open the software as an administrator by right-clicking its icon in the Windows Start menu and selecting **Run as administrator**.



2. In the software's main menu, navigate to **Help | Registration**. The licensing window is displayed.



3. Click **Deactivate**.
4. The License Deactivation dialog box is displayed. Click **Yes**.
5. A deactivation string is displayed. Copy the code and send it in an E-mail to support@intelitek.com requesting to return the license to the Intelitek database.
6. Click **OK** to close the dialog box.

The license is deactivated. The software reverts to limited functionality mode. In this mode, the user can view and save their work but cannot edit. To relicense the software, follow the instructions Section 2.2 Offline Activation on page 7.

## 2.5. Workstation Licensing FAQs

*What is a workstation license?*

A workstation license is authenticated once by an Intelitek server, after which the software is unlocked. The software is unlocked for a period of time according to the purchased license, either being permanently unlocked, limited to a number of days, or expiring at a fixed date.

*Must a computer be connected to the Internet to license the software?*

No. In addition to online licensing, Intelitek software can also be unlocked offline. Refer to Section 2.2 Offline Activation on page 7 for more information.

*What happens to the software when the license expires?*

When the software expires, it will revert to limited functionality mode. In this mode, the user can view and save their work but cannot edit.